

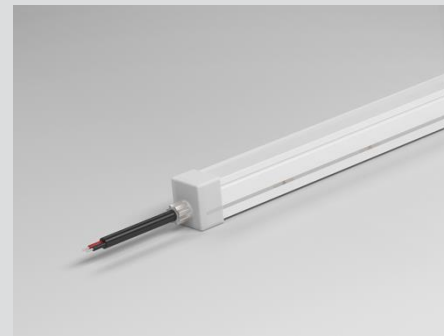


GLOPRO1312



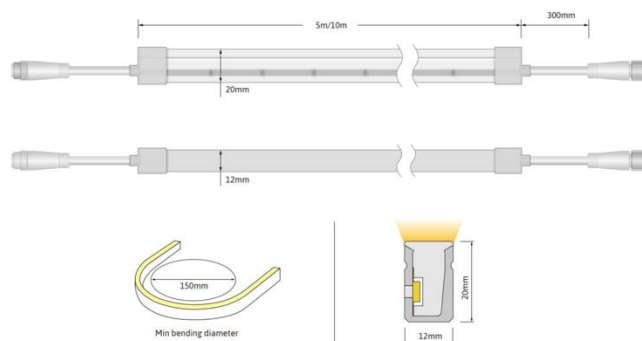
FEATURES

- Environmental protection grade silicone material
- Integrated extrusion moulding process
- Unique optical light distribution structure design, uniform lighting surface and no shadow;
- IP67 protection level, salt solution resistance, acids & alkali and UV resistance
- Excellent toughness, simple and stylish appearance, delicate and unique;
- Customisable for low-voltage operation suitable for car lift applications



Basic Parameters	Details
Size	12mm x 13mm x 10000mm (or custom)
Continuous Max Run	10 metres
IP Rating IP65	>IP67
Finish (F)	White (W), Black (B)
Input Voltage	DC24V
Typical power	10W/1m or 50W/5m
CCT	2700K, 3000K, 4000K, 65000K, CCT, RGB+CCT
CRI	>90
Beam Angle	60°, 90°, 170°
Warranty	5 years or 30,000 hours
Energy Efficiency Class	A+
Control	Phase-cut leading & trailing / 0-10V / 1-10V / PWM / DMX / DALI

DIAGRAMS



Product Ordering			
CODE	COLOUR	LM/M	STOCK
GLOPRO-24-1213-10-2700-67	2700K	820	YES
GLOPRO-24-1213-10-3000-67	3000K	900	YES
GLOPRO-24-1213-10-4000-67	4000K	980	YES
GLOPRO-24-1213-10-6500-67	6500K	1000	YES
GLOPRO-24-1213-10-2700+4000-67	RGB	620-630nm	S/O
GLOPRO-24-1213-10-RGB+CCT-67	RGB+CCT	520-530nm	S/O