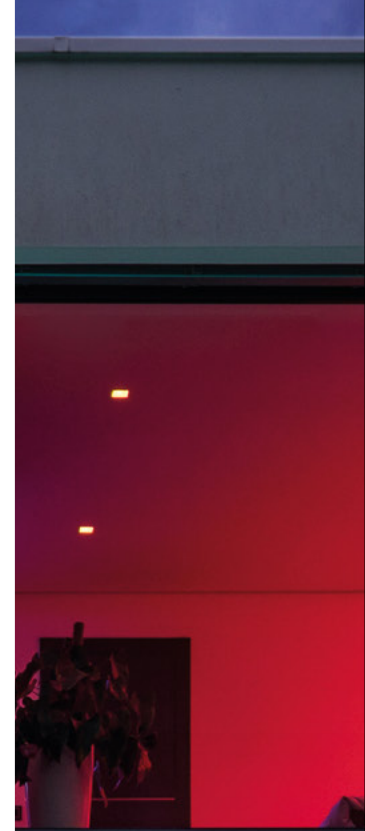




CAPABILITY STATEMENT





Company Summary

Lightcore is a forward-looking lighting company offering a full range of innovative, high-quality, turn-key lighting solutions and products for indoor and outdoor applications to the wholesale and trade industry.

Established in Brisbane in 2010, Lightcore has since delivered over 4000 projects across Australia and New Zealand with practical, reliable and cutting-edge LED lighting solutions and products at competitive prices.

We carry a lot of stock, have accounts with the major wholesalers, Australian based manufacturing facilities as well as in-house lighting designers, electricians and estimators. Considering this, we are very strong in the D&C, alternative specification, and custom solutions sector because we can not only assist with lighting designs and schedules but also deliver high-quality alternatives faster, on account terms, at competitive prices.

It is our company mission to provide distinctive LED application-based lighting solutions which outperform our industry in durability, specification, customisation and availability.

Est.
2010

4300+
Completed
Projects

\$20MM
Liability

\$5MM
Indemnity

Highly
Specialist
Staff

5 Year
Minimum
Warranty

D&C
Experts

Custom
Solutions

Design &
Installation
Support

Stock on
hand
**Fast
Delivery**

Competitive
Pricing

Sustainability
Focused

High
Quality

**Indoor &
Outdoor**

**Local &
Personal
Service**

EXCEPTIONAL CUSTOMER CARE & SERVICE

We are proven to provide exceptional customer care and service by continuously seeking customer feedback from customers to continually improving. We strive to respond to all enquiries within two hours and our average delivery time for core product is 2 business days. We never want to be the cause of on-site delays or project churn - so if we need to jump in the car at 4pm on a Friday to deliver an order on-time, we will!

QUALITY

Quality is hard to fake when it comes to lighting - seeing is believing. Our customers repeatedly provide positive feedback about the standard of our products and services and how they contribute to the success of their projects.

LOCAL MANUFACTURING & SUSTAINABILITY

Lightcore is one of the few Australian lighting companies manufacturing many of its products locally. By investing in the latest machinery and training, we not only deliver high-quality custom lighting solutions faster and more affordably but also significantly reduce carbon emissions by minimising the frequency of imports. We strive for sustainability by embracing smarter business practices, solutions, and products.

PASSION & EXPERIENCE

Lightcore was founded and is led by people with a shared passion for lighting. Trading since 2010, Lightcore has successfully delivered 4000+ projects to its loyal customers across Australia and New Zealand.

EDUCATION & CONSULTATION

We offer more than just a transaction - we also provide advice on the best way to approach your projects. Plus, our expert team can provide you with the information you need to pass onto other project stakeholders. We also provide lux calculation and product scheduling services.

ENDURING VALUE

We combine design goals with end-user goals and product suitability to ensure we deliver on our promises and achieve the best project outcomes. This strategic approach improves project workflow and saves our customers 20% on average while exceeding quality and service expectations. We achieve this through in-house manufacturing and by working directly and transparently with suppliers, designers, wholesalers and contractors.

RELIABILITY

Our proven process and experience helps us to identify red flags early and prevent issues occurring - saving time, money and reputation. Our warranties are some of the best in the industry with an average of 5-years.





Differentiators

✓ SPEEDY SERVICE

✓ STOCK ON-HAND

✓ BEST VALUE FOR MONEY

✓ INDUSTRY EXPERIENCE

✓ CUSTOMISATION / ALTERNATE SPEC SERVICES

✓ ON-SITE QUOTING AND PROJECT ADVICE

✓ IN-HOUSE MANUFACTURING

✓ LITERALLY GO THE EXTRA MILE

COMMERCIAL



WELLNESS



KITCHENS



PUBLIC



RETAIL

HOSPITALITY



MULTI-RES



SUBMERSIBLE





OFFICE



SIGNAGE



BATHROOM



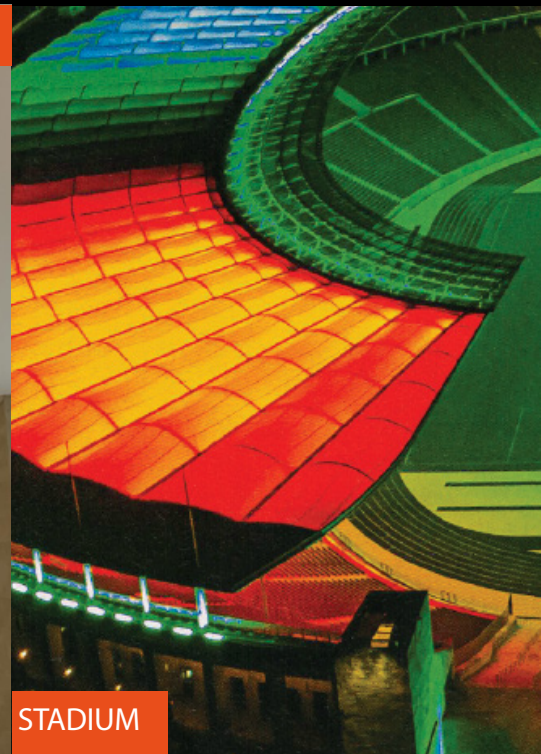
HEALTH



CORE COMPETENCIES



RESIDENTIAL

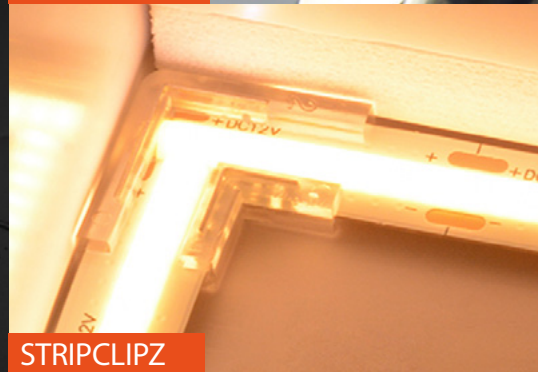


STADIUM

BLACK GLOPRO NEON

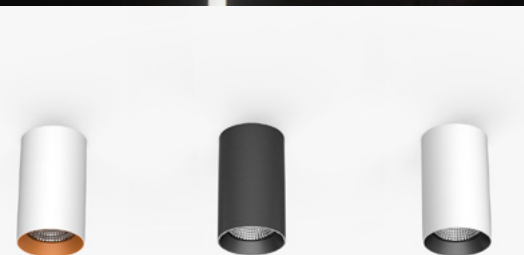


HANDRAIL



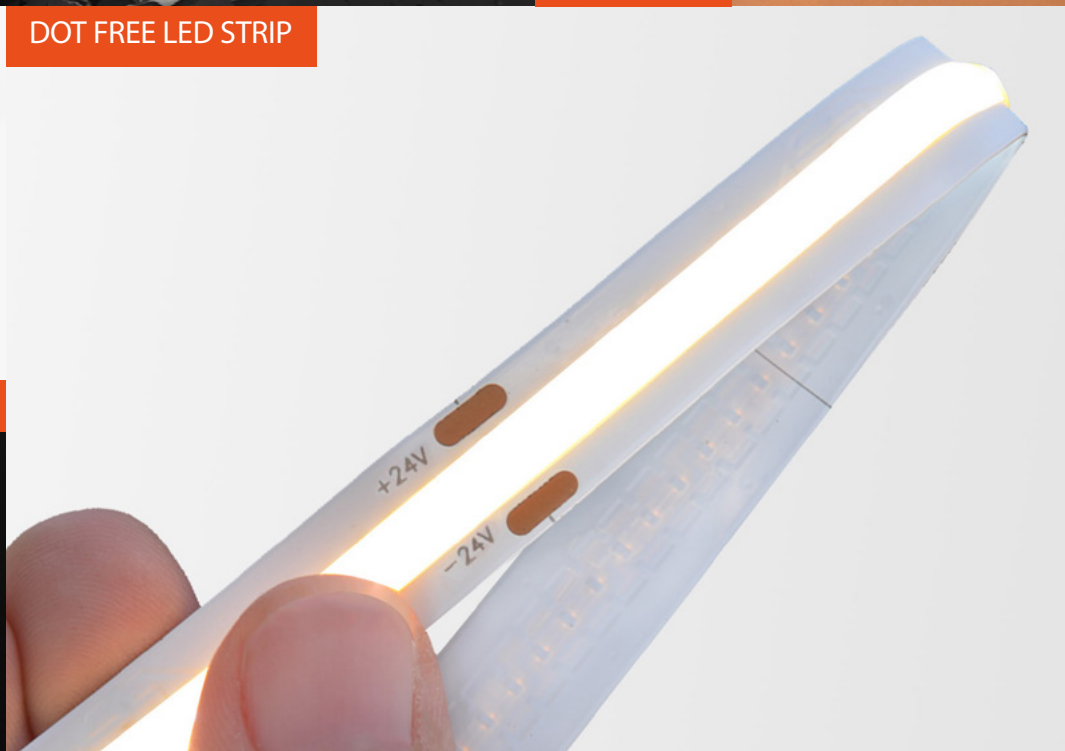
STRIPCLIPZ

DOT FREE LED STRIP



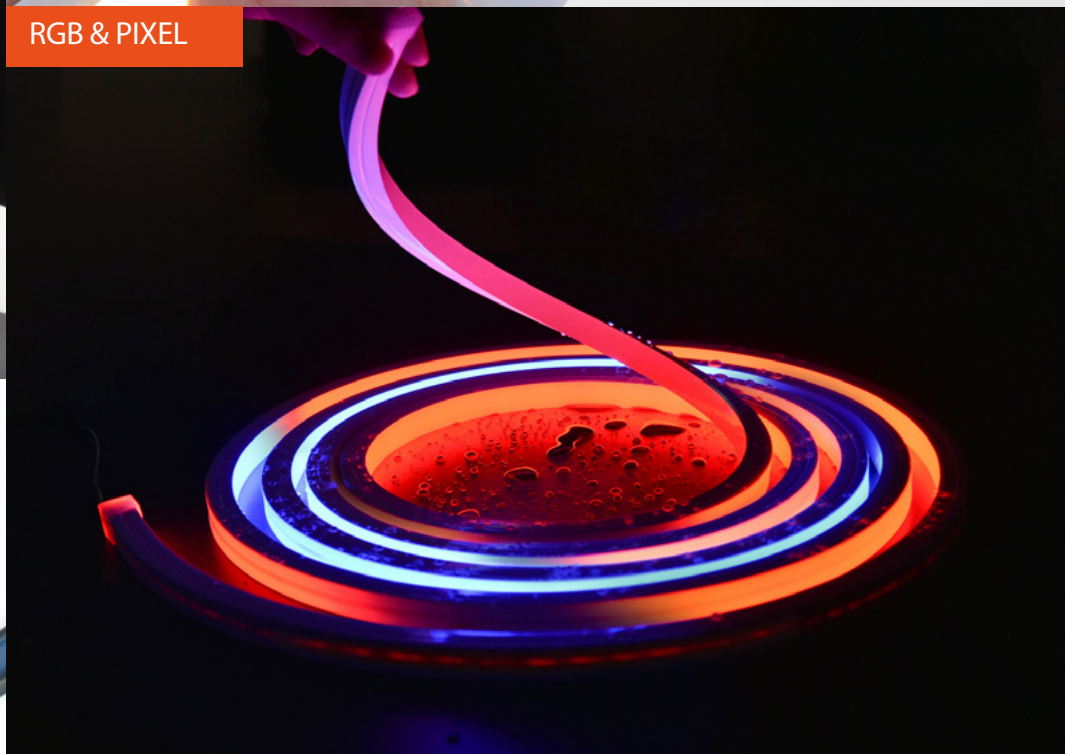
CEILING LIGHTING

NEON ROPE



RGB & PIXEL

FLEXIBLE WALL WASH





GLOPRO NEON FLEX



UNDERWATER SPOTS



PROFILES

POWER SUPPLIES



CORE
PRODUCTS



CUSTOM ARCHITECTURAL LINEAR



CONTROL

The image features a minimalist design with a black background. A large orange L-shaped block is positioned on the left and bottom. A smaller orange rectangle is located in the top right corner. The text 'FEATURED PROJECTS' is centered in the black area.

FEATURED PROJECTS



Public Space



Hospitality



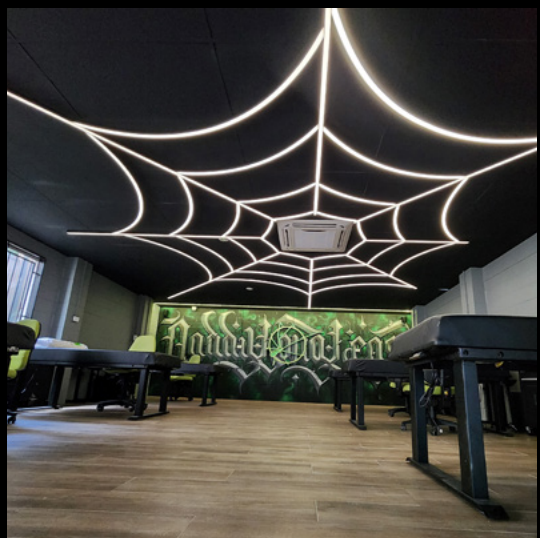
Retail



Hotel & Student



Advertising



Workspace



Shopping Centre



Facade



Resort



Wellness



Pool & Spa



Mult Residential



Hotels & Wellness



Multi-Residential Common Areas



Offices & Commercial



Gymnasium Lighting



Sport Clubs



Commercial Buildings



Public Space— The Jem Southbank, QLD



WATCH VIDEO

Client: South Bank Corporation

Brief: Replace the original and failing lighting with new lighting that will integrate with existing control system.

Solution: The original lighting and control system, installed in 2008, was a unique, internationally acclaimed interactive lighting experience. Over time, the lighting suffered significant wear and tear, leading to frequent malfunctions. To avoid the need for a new control system which would be highly complex and expensive, we reverse-engineered the original lighting and custom-manufactured new lights using advanced chip sets and LEDs that seamlessly integrated with the existing system in a plug-and-play manner. During a three week period we replaced the original lighting, installed the new lights, and improved the control system for easier maintenance.

Completed: June 2024

“Lightcore exceeded expectations, delivering a solution others could not which saved us significant time and money.”

Zoe Bayer, Project Manager, South Bank Corporation





Hospitality — The Stratton Newstead, QLD

Client: Newstead Hospitality Group (NHG)

Brief: Design, supply, and facilitate a unique, dynamic, minimal, and multi-layered lighting solution for WWII hangers being converted into bar and kitchen.

Solution: Due to the unique shape of the hangers, we decided to take a very hands-on approach. This included many on-site visits and after-hour testing sessions. We ended up using:

- GLOPRO RGBW Neon Flex for the feature archways.
- Dotless LED strip for the bar, bathroom mirrors, and general wall washing.
- RGBW up-lighting to showcase vertical beams.
- Narrow beam track lighting with honeycomb diffusers for general and table lighting.

Completed: March 2022

“It was really important that we got the lighting right. Lightcore went above and beyond and we’re very happy with the result.”

Ben Brown & Tarryn McMullen, Owners, NHG





**Retail —
Greenvale Fresh,
Greenvale, VIC**

Client: Valor Group / Studio IOD

Brief: Develop lux-compliant lighting schedule and supply to awarded contractor.

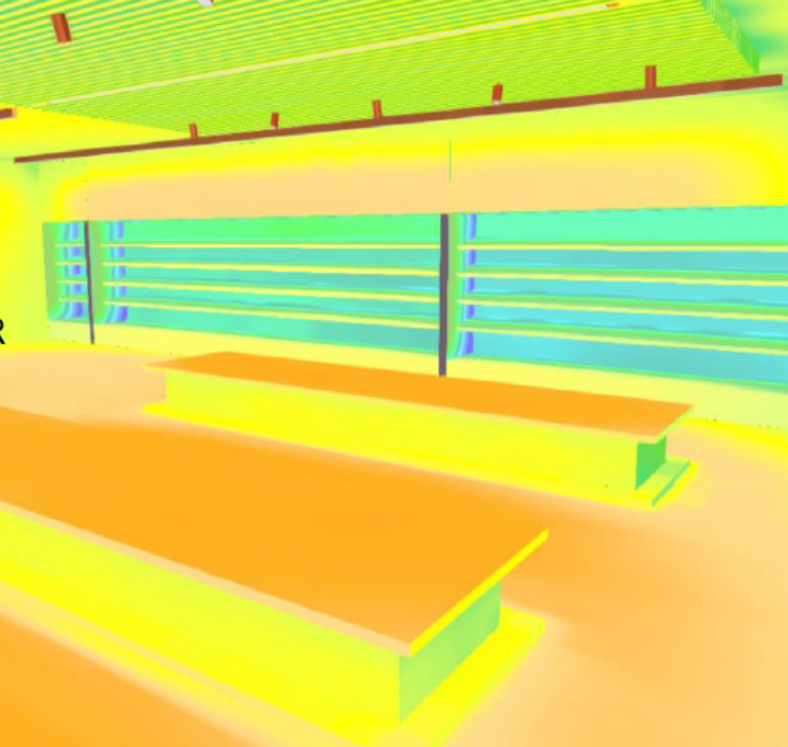
Solution: Provided schedules, supporting datasheets and lux reports to support the design vision and budget. Products used:

- Vega 25W track lighting
- Slimline 25x25mm profile with high-brightness strip
- Dot-free LED strip
- Liquid lux 35x35 linear lighting

Completed: September 2023

Lightcore is great to work with! They help with scheduling, lux plots, design, product supply, and installation coordination. Highly recommend!

Isabelle Oliveri, Design Director, Studio IOD





Hotel & Student Living — UQ Student Residences, St. Lucia, QLD

Client: McNab / University of Queensland / Haines Electrical

Brief: Source and supply suitable alternatives to the high-end wall and linear lighting on the schedule.

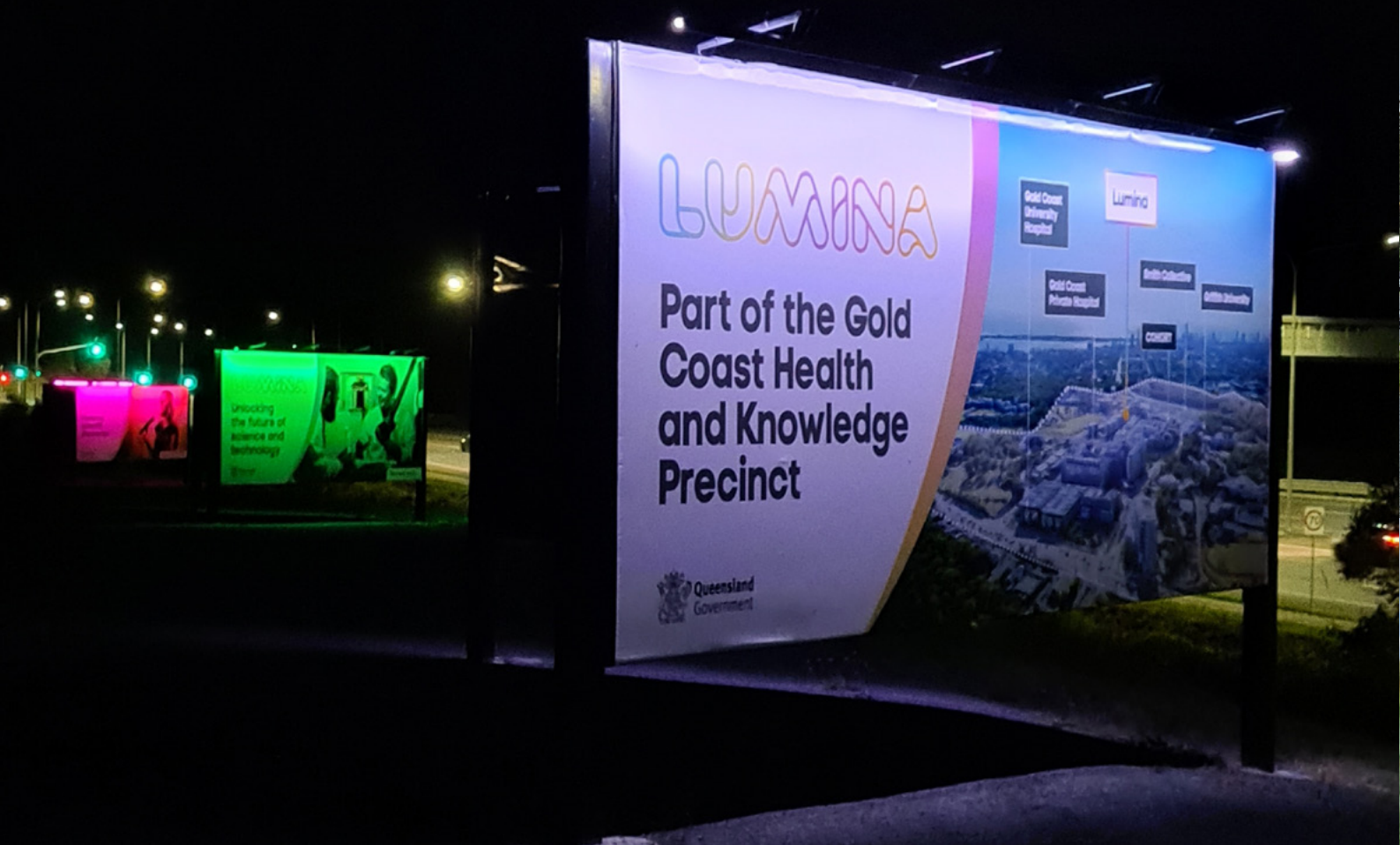
Solution: Developed and supplied custom up/down wall light and linear lighting solution which saved the customer \$200,000+.

Completed: November 2021

“Lightcore makes everything really easy for you. We wish more suppliers worked like them”

Cody Gosling, Project manager, Haines Electrical





Advertising — Lumina Gold Coast Health & Science Precinct, Southport, QLD

Client: Economic Development Queensland (EDQ)

Brief: Design, supply, and install custom, dynamic, solar-powered lighting solutions for eight highway-adjacent billboards in Southport to enhance night-time exposure to oncoming traffic.

Solution: To provide even and dynamic illumination with minimal glare, we used custom made RGBW Glopro 1516 linear lighting with remote colour control.

Custom cantilever brackets were prototyped, tested, and refined before being certified and fabricated. We applied the same process to the solar panel housing, designing custom, wall-mounted brackets to conceal the panels and control gear so only the billboards were visible to oncoming traffic.

Completed: June 2022

“Lightcore delivered exactly what they promised, on time and within budget.”

Natalia Palacio, Senior Engagement & Marketing Officer,
Economic Development Queensland



LIGHT OFF

LIGHT ON





Work —
Daddy Long Legs Tattoo
Studio,
Norman Park, QLD

Client: Daddy Long Legs

Brief: Design, supply, and install a custom spider-web shaped commercial light to be used as both feature and functional lighting within a boutique tattoo studio.

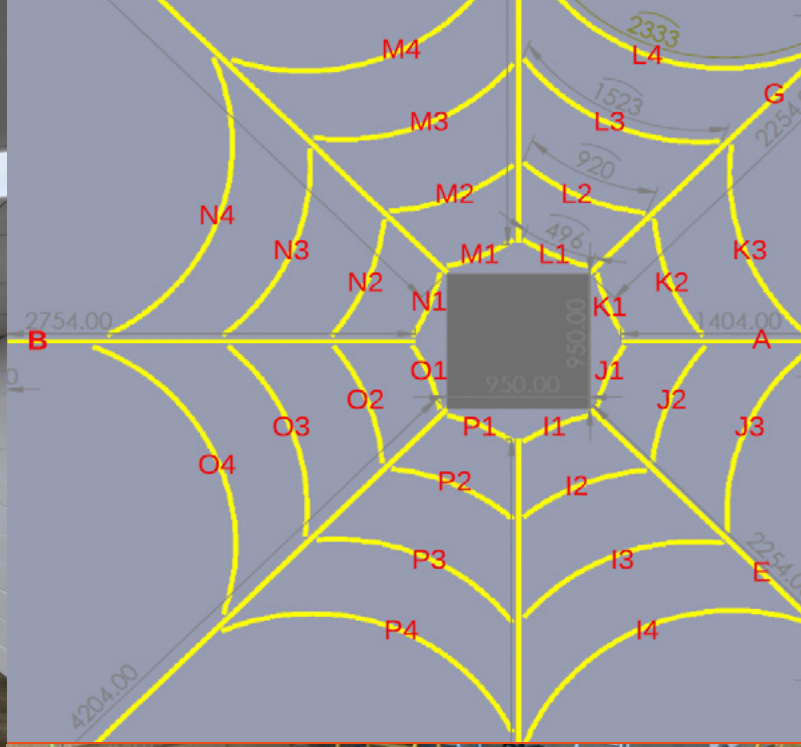
Solution: After meeting on-site and clearly understanding the client's goals and site limitations, we developed and supplied a spider-web RCP utilising our Liquid Lux 3535 linear range. We also provided supporting lighting calculations for client review.

After client approval, we custom-built and tested the fixture off-site and had the entire project delivered and installed within 8 weeks.

Completed: June 2023

"Lightcore designed, supplied, and installed everything on-time and within budget. The end result is a real show stopper!"

Matt Curzon, Owner, Daddylonglegs





Shopping Centre — Casurina Shopping Centre, The Quarter Darwin, NT

Client: Sentinel Property Group

Brief: Supply a mix of surface-mounted and suspended commercial-grade light fittings to replace 270 failing fixtures.

Solution: We flew to Darwin to inspect the property and meet the on-site management and maintenance team. This helped us identify additional issues, such as vandalism, lack of supplier support, maintenance challenges, and poor light output. We then developed a custom fitting that was easy to install, purpose built to withstand harsh NT weather and vandalism, and provided better lighting. Everything was delivered within 12 weeks of PO, our solution was also more affordable than generic options previously submitted by others.

Completed: February 2023

“Lightcore invests the time to properly understand the project and problem to deliver high-quality solutions, quickly and competitively.”

Chris Murray, Project manager, Sentinel Property Group





Facade —
609 Stanely St,
Woolloongabba, QLD

Client: Steve Wilson / Brisbane City Council

Brief: Design, supply and install a dynamic lighting solution for heritage facade.

Solution: Using RGBW Glopro Neon flex sensitively installed to the lower/middle/upper facade sections to provide even illumination while also highlighting facade architectural elements and enabling individual wireless control and colour selection. Indirect external Dot-free LED also installed to the building signage. Everything was installed within one week.

Completed: October 2020

“We love this heritage building and the lighting result is amazing, everyone asks about it and our tenants are thrilled”

Steve Wilson, Building Owner





Resort —
Sebel Noosa,
Noosa, QLD

Client: Sebel Noosa
Designed by: F-POV

Brief: Develop and supply an alternative lighting schedule that is more affordable, available, and of equivalent or better quality and aesthetic.

Solution: Audited the original specified lighting schedule and supplied a hybrid schedule including original and alternative products. By doing this we delivered the original design goals, simplified the supply process and saved the client upwards of \$100,000.

Completed: Feb 2024

“Lightcore are great to work with and deliver incredible value”

Nathan Palmer, Project Electrician





Wellness —
iffeelgood,
Coopers Plains, QLD

Client: iffeelgood

Brief: Supply and install custom gym lighting for D&C fitout.

Solution: Working with the client to develop a simple and unique lighting layout that would differentiate the gym, support the brand of safety, while also provide adequate lighting throughout. We custom made all of the custom suspended linear in-house and had the project delivered and installed within 4 weeks of order.

Completed: October 2023

“Always enjoy working with Lightcore. They’ve got a great team and just get the job done”

Martin Upton, Owner, iffeelgood





**Pool —
Residential project,
Coorparoo, QLD**

Client: Private

Brief: To supply custom made and highly durable RGBW lighting to go beneath pool copings, under steps, and around spa.

Solution: Meeting with contracted electrician and pool builder on-site to review installation approach and constraints. Check-measures were conducted and then we custom made everything to be as plug and play as possible, including custom 20m cable lengths. Installation was seamless.

Products used:

- Glopro 1220 (side bendable)
- Glopro 1010 (top bendable)

Completed: June 2022

“We’ve been using Lightcore for years, always a joy to work with”

Martin Egerton, Project Electrician, MCJ Electrical





**Multi Residential —
Atria,
Toowong,
QLD**

**“Lightcore is extremely
proactive and a pleasure to
work with.”**

Shane Cook, Site Manager, Graya

**“Lightcore provide great
ideas and project support.”**

Zanee Mathews, Senior Interior
Designer

Architect: Z Architects

Builder: Graya

Brief: Provide lighting design support and advice,
product schedules, full lighting scope supply and
supply management.

Solution: From concept through to project completion, Lightcore worked closely with ZA, Graya, installers, wholesalers, and suppliers to provide everyone with one point of contact for anything and everything lighting-related throughout the course of the project. Large luxury projects face regular changes and challenges and require quick solutions to avoid costly delays, by working this way we remove a lot of the red tape and streamline the decision making and lighting supply process. Lightcore’s proactive, solution-driven approach saved significant time, cost, and stress for all parties involved. Lightcore also securely stored all products at our warehouse throughout the course of the project for faster delivery.

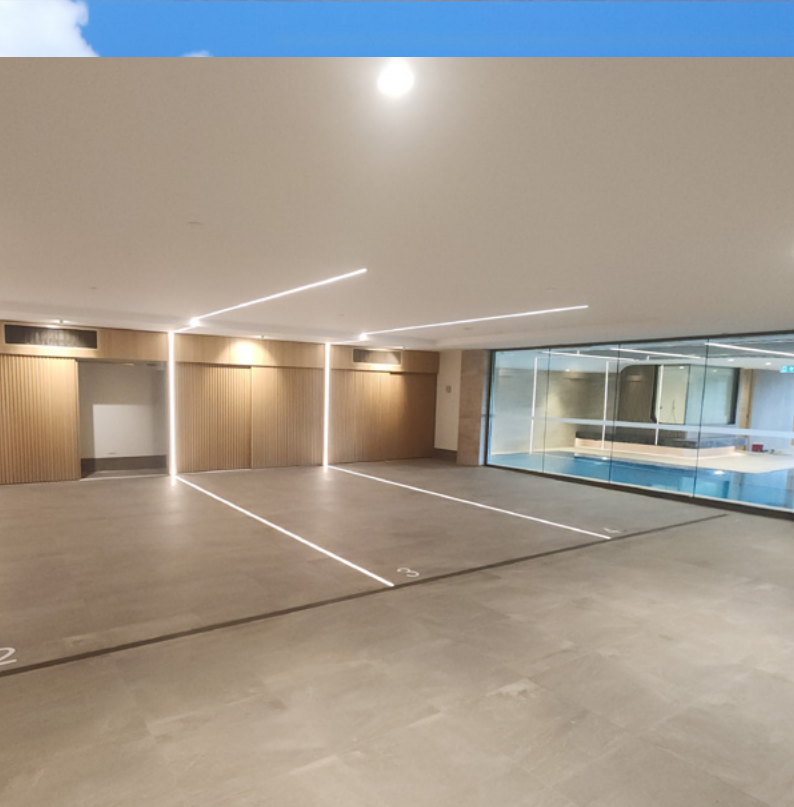
Completed: February 2025













Emporium
HOTELS | South Bank

Hotels & Wellness – Emporium Roof Top

“We’re pleased to see
our rooftop pool looking
stunning at night again!
Lightcore is very easy to
work with and deliver what
they promise”

Stevie Strano, Asset Manager,
Anthony John Group

Client: Anthony John Group

Brief: Remove and replace failing colour-changing
pool lighting with a new and more durable option.

Solution: Lightcore visited the site to assess the
existing products and identify the causes of failure.
One of the key issues was excessive cable joins,
which were being submerged in water, combined
with non-injection-moulded feeds. To resolve this,
Lightcore developed a solution featuring longer
feeds to eliminate cable joins and injection-moulded
ends to enhance durability. This custom solution
was manufactured in-house using our state-of-the-
art neon machinery, allowing us to quickly deliver
factory-grade custom made IP67-rated neon lengths.
The order was completed and delivered within one
week of confirmation, and installation was completed
in just two days.

Products used: GLOPRO-24-1220-RGBCCT-67

Completed: September 2024





Multi-Residential Common Areas – The Establishment

“The owners and residents are very happy with our new common area lighting, it’s definitely enhanced the property and we’re looking forward to working with Lightcore again”

Scott Wicks, Director, SNI Real Estate

Client: The Establishment

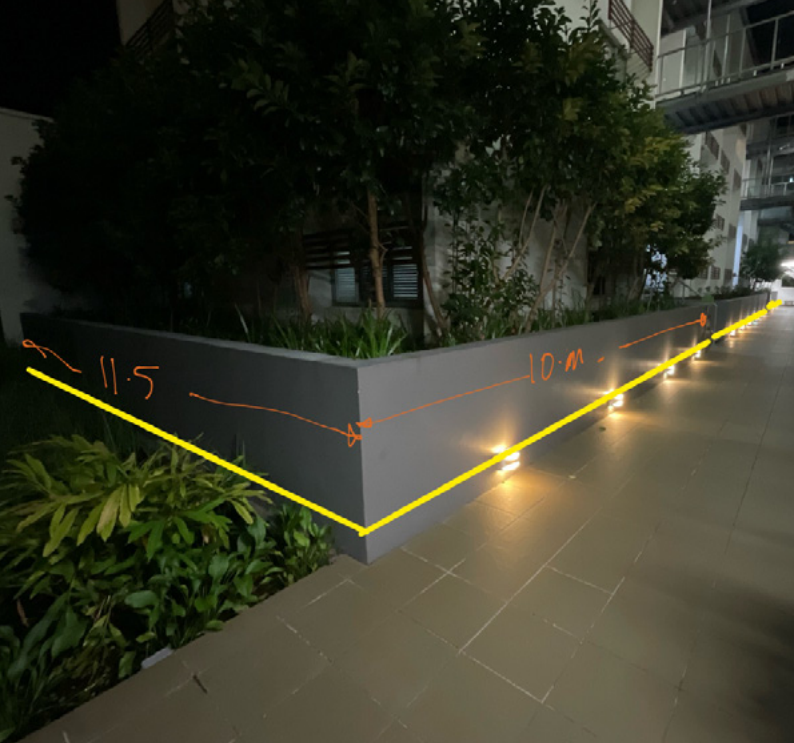
Brief: Remove existing and dated bunker lights from common area footpaths and replace them with a more modern and interesting lighting solution.

Solution: The Establishment’s building manager, referred by Curious Us, sought a modern alternative to replace the failing bunker lights. Lightcore assessed the site and, after on-site testing, proposed IP67 custom-made black neon housed in powder-coated profiles to seamlessly blend with the Dulux Vintage Green walls. This gap-free neon lighting provided a sleek, non-intrusive glow while enhancing aesthetics.

Though the solution cost twice as much as a direct replacement, the body corporate loved the concept and approved the work. Lightcore also managed the installation, integrating custom ventilation cover plates to conceal transformers. The entire project was supplied and installed within two weeks of order confirmation.

Product Used: GLOPRO-24-1615-3000-67-B

Completed: September 2024





Offices & Commercial – Clarendon Offices

“Since we started using Lightcore for our projects the lighting has become easier to manage and a real point of difference for our projects. They’re not just good to work with, they’re great!”

Isabella Oliveri, Design Director,
Studio IOD

Designer: Studio IOD
Builder: Hunter Projects

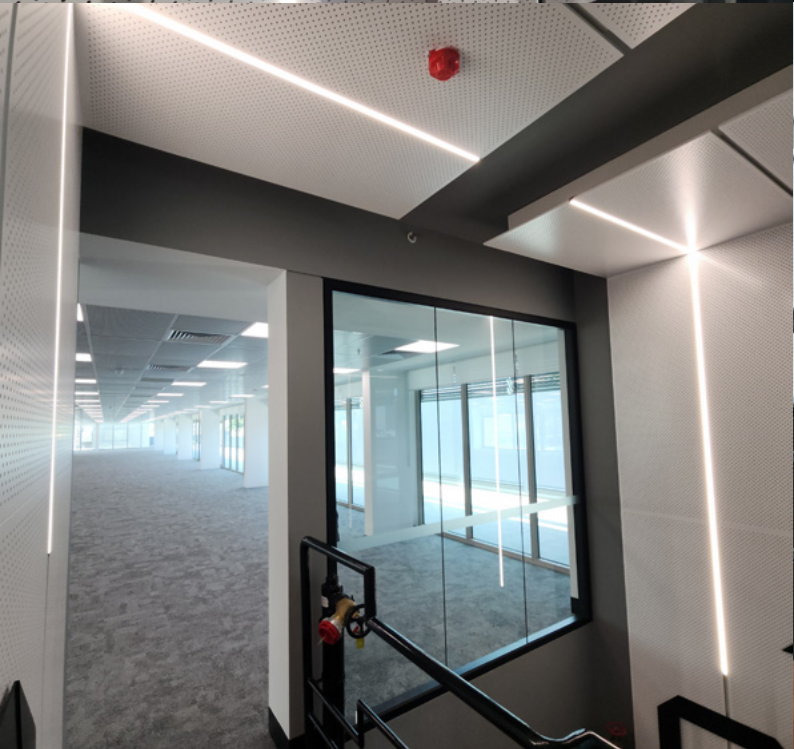
Brief: Develop a lux-compliant lighting schedule and supply to the awarded contractor.

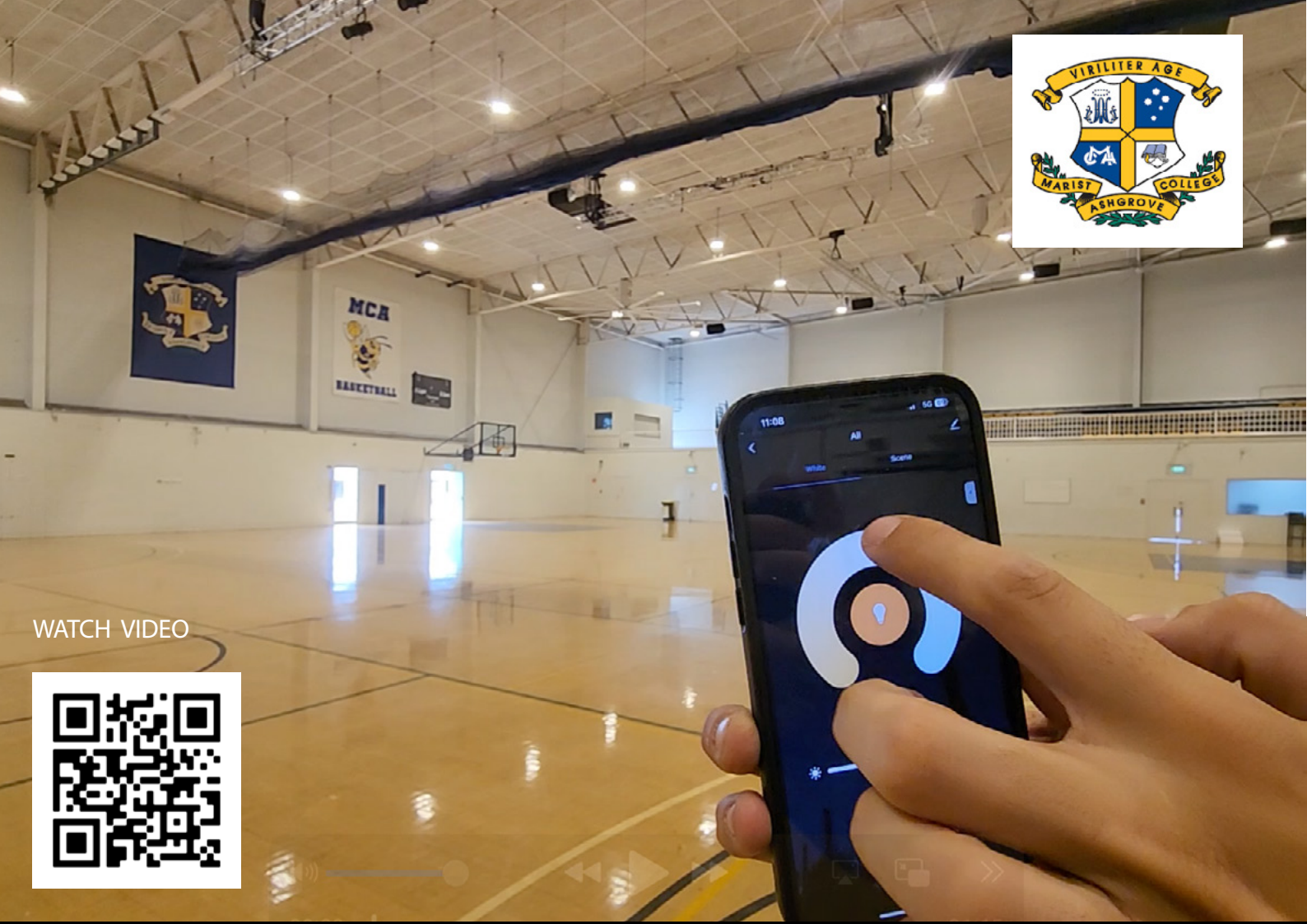
Solution: Lightcore provided detailed lighting schedules, supporting datasheets, and compliant lux reports to align with the design vision while meeting budget requirements. The project included the supply of custom-made linear profiles for hallways and stairwells, panel lighting for general office use, and downlighting and dot-free strip lighting for bathrooms and kitchen areas.

Products used:

- 25x25mm profile with high-brightness strip
- Dot-free LED strip
- 600x600 recessed panel lights
- CELLO 13W recessed downlighting

Completed: October 2024





WATCH VIDEO



Gymnasium Lighting — Marist College Ashgrove

“We’re very happy. The project cost much less than we were expecting and the lights are very easy to control.”

Russell Randel, Director of Projects and Infrastructure, Marist College Ashgrove

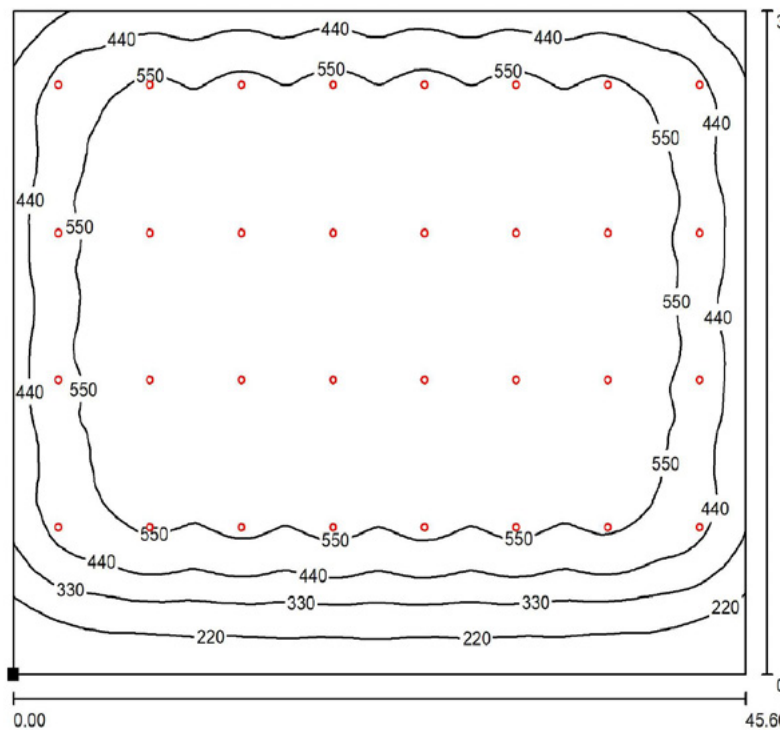
Client: Marist College Ashgrove

Brief: Replace existing high-bays with a dynamic, white-tunable, wirelessly controlled lighting solution.

Solution: Marist needed a versatile, white-tunable high-bay lighting solution to accommodate the gymnasium’s multiple uses, but struggled to find an affordable, user-friendly option. Lightcore provided the ideal product—an app-controlled, 200W white-tuneable, fully dimmable high-bay requiring no special installation. Lightcore provided Lux calculations to confirm the solution met required illumination levels, and Marist approved the project. Installation was quick and seamless, with a simple fixture replacement completed in just two days. The result exceeded expectations, enhancing both lighting quality and functionality.

Product Used: CLARO HIGH BAY

Completed: October 2024





Golf Club — Pelican Waters Club House

“Lightcore are amazing to deal with. They’re detail-orientated, easy to work with, and get things done quickly. It’s not uncommon for Lightcore to hot-shot product to site for us — which is amazing service.”

Brodie Nesbitt, Owner, Power Solutions

Client: Power Solutions

Brief: Supply custom LED neon, profiles, and drivers tailored to the architectural and technical needs of the Pelican Waters Golf Club redevelopment. The focus was on speed, cost efficiency, and premium lighting results.

Solution: Lightcore collaborated with Power Solutions to deliver a high-impact lighting package that met budget and performance requirements.

To streamline the system and reduce component costs, we modified key products — including our 10x10mm GLOPRO LED neon and DOTFREE strip lighting — to operate at 5W/m. This lowered the need for high-capacity transformers and dimmers, without sacrificing visual quality.

All LED neon was produced in-house using our injection moulding machines. This enabled fast turnaround times and IP67-rated durability.

Lighting Used:

GLOPRO 3D1010 Neon – 3000K (5W/m & 10W/m)

DOTFREE LED Strip – 5W/m & 10W/m

Completion Date: June 2025





Hospitality — Penelope Bistro

“Lightcore is incredible to work with and I’m looking forward to doing more projects with them in the future.”

Jason Coats, Owner, Penelope Bistro

Client: Coats Group

Brief: To modify standard wall lights to give them a luxurious, high-end appearance, while also providing on-site installation support and custom black LED neon flex to integrate seamlessly with curved joinery elements.

Solution: Z Architects and owner Jason from Coats Group approached Lightcore to help elevate basic wall fittings into visually striking design features. While they appreciated the shape of the original fittings, the light output was underwhelming.

We removed the standard bulb components and replaced them with custom DOTFREE LED strips housed in smokey black diffused profiles emitting a very warm glow. This dramatically enhanced the ambiance and delivered the refined, moody atmosphere the client envisioned — all without requiring a high-end fixture budget.

Additionally, we supplied custom black LED neon that was tailored for the bistro’s curving bar joinery, maintaining a consistent dark-toned lighting theme throughout the space.

Completion Date: March 2025





Commercial Building— 60 Edward Street End of Travel Facility

“It was our first time working with Lightcore, and we were unsure about the custom products and worried they had underquoted the installation costs. But they overdelivered - everything was straightforward, and the result looks amazing. We’re excited to work with them again.”

Adam Pollard, Project Manager,
Renascent

Client: Sentinel Group

Brief: Deliver a tailored lighting solution for the End of Trip (EOT) facility and bathrooms, combining visual impact with technical precision.

Solution:

Design studio Curious Us envisioned a bold architectural lighting scheme using linear LED profiles that traced the space’s curves. Lightcore worked closely with the designers providing detailed lux calculations, custom product drawings, on-site checks, and plug-and-play lighting designs to streamline installation and minimise on-site work.

The lighting system was fully bespoke, fabricated to match the exact curves and joins of the EOT space. In the bathrooms, we added mirror-finish ceilings with custom-length linear lights between battens, wall-washing LED neon, and low-glare downlights. We also converted a red-accented feature drum into a custom pendant, adding a striking focal point.

Lighting Supplied:

AIRLUME 6060

GLOPRO 1010 3000K

DOTFREE LED STRIP 3000K

LUXE DOWN LIGHTING

Completion Date: May 2025 (The full installation was completed within just two days)





Resort — Eco View Retreat

“Lightcore is a delight to work with and we’re looking forward to working with them on future projects.”

Tony & Sue de Leede

Client: Tony & Sue de Leede

Brief:

To review the initial lighting product schedule and provide suitable alternatives that aligned with a revised, more cost-effective budget — without compromising on design intent.

Solution:

Lightcore worked closely with owners Tony and Sue de Leede to revise the product specification list, maintaining the visual and functional goals of the original design while significantly improving the project’s price point.

We then partnered with the on-site installation team at ZEN Electrical, coordinating delivery logistics to ensure that all products arrived as needed and on time — supporting an efficient, phased installation process.

DOTFREE LED Strip
Driveway Bollards
Athens Up/Down Wall Lights
Step Lights
LUXE Down Lights
Recessed Wall Lights
Bollards

Completion Date: March 2025





lightcore.com.au

1-300-652-719

hello@lightcore.com.au

[@lightcore_lighting](#)

Delivering bright lighting solutions
since 2010