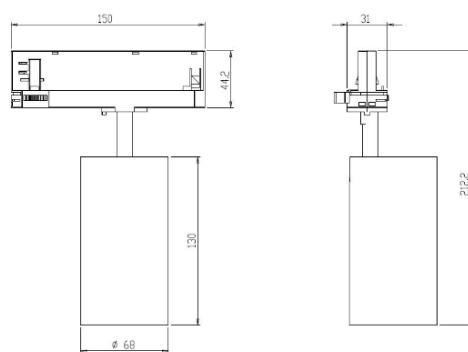




LIVO TRACK 28W

FEATURES

- Interchangeable decorative sleeve system allows customizable finishes (White, Black, Brass)
- Cost-effective: users can change the look without replacing the entire fitting Supports On/Off, Triac, 1-10V Knob, and DALI dimming options
- Offers selectable beam angles: 24°, 36°, and 50°
- Adjustable with 350° horizontal rotation and 90° vertical tilt
- Rated IP20, suitable for indoor applications
- Delivers 3400 lm (3000K) or 3800 lm (4000K) output with CRI90 color accuracy



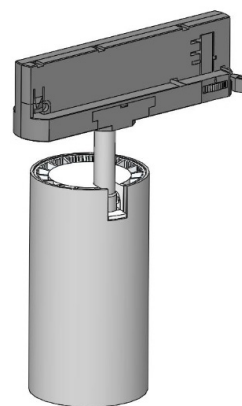
Basic Parameters

Material	Aluminium
Track system	3 Phase 4 wires
Power	28W
Light source	COB
Operating voltage	AC220V
Rotation Angle	350°
Tilting Angle	90°
Ingress protection rating	IP20
System Lumen	3400lm(3000K) / 3800lm (4000K)
Colour Temperature	3000K/ 4000K
Insulation Class	I

Ordering Information

CODE: LVTC28

TECHNICAL DIAGRAMS



FIXTURES

