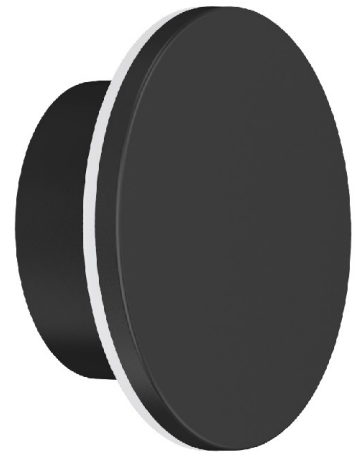
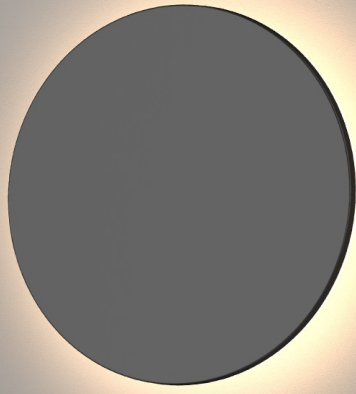


LC105



FEATURES

WL105 wall lamp is an atmospheric lighting design, adopting a 2835 SMD light source and PC diffuser.

With a backward facing lighting design, it emits a soft and uniform light output. An ADC12 Aluminum housing which ensures great thermal management.

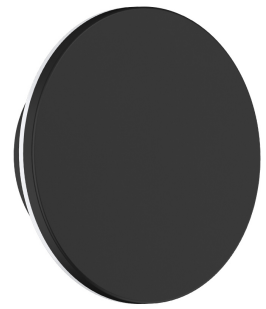
Suitable for a wide range of environments thanks for its IP65 waterproof rating, and changeable CCT.

- Backward lighting design for a soft lighting atmosphere
- ADC12 aluminum offers great heat dissipation.
- Interchangeable CCT(3000K+4000K+5700K) with a slide switch
- IP65 for the whole lamp, suitable for both indoor and outdoor use
- Internal flicker-free driver
- Triac dim available

SPECIFICATION

BASIC PARAMETERS

Code No.	8W	15W
Dimension (mm)	Ø160*50mm	Ø250*50mm
Watt (W)	8W	15W
Rated Input Voltage (V)	AC230V	
Input Voltage (V)	AC220-240V	
Light Source	SMD2835	
SDCM	<6	
CCT (K)	1-CCT: 3000K/4000K/5000K/5700K 3-CCT: 3000K + 4000K + 5700K	
CCT Selection DIP Switch	Yes	
Non-DIM 1-CCT Luminous Flux (lm) ±5%	500-620	1000-1220
DIM 1-CCT Luminous Flux (lm) ±5%	500-620	1000-1220
Non-DIM 3-CCT Luminous Flux (lm) ±5%	510-640	1000-1260
DIM 3-CCT Luminous Flux (lm) ±5%	510-640	1000-1260
CRI	≥80	
Beam Angle (°)	90°	
LED Driver	Built-in	
Dimming Option	Triac	
Electrical Class	Class I	
Ingress Protection (IP Rating)	IP65	
Impact Resistance (IK Rating)	IK06	
Product Finishing (Base)	Black RAL9005	
Optics Material	PC	
Housing Material	Aluminium+PC	
Lifetime (hr)	50,000h	
Glow wire test (°C)	750°C	
Operating Temp. (°C)	-20°C ~45°C	
Storage Temp. (°C)	-20°C ~65°C	
Installation	wall mount	



PRODUCT ORDERING

CODE	KELVIN	Watt (W)	Colour	STOCKED
LC105-8-CCT-B	CCT	8W	Black	S/O
LC105-8-CCT-W	CCT	8W	White	S/O
LC105-15-CCT-B	CCT	15W	Black	S/O
LC105-15-CCT-W	CCT	15W	White	S/O