

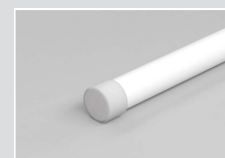
DOME 16

FEATURES

- Made of Dow Chemical SILASTIC™ ET-7021 silicone rubber, which provides high transparency and high strength.
- Environmental protection grade silicone material, integrated extrusion molding process.
- Unique optical light distribution structure design, uniform lighting surface and no shadow.
- IP67 protection level, salt solution resistance, acids & alkali and UV resistance.
- Excellent toughness, simple and stylish appearance, delicate and unique.
- 5 years warranty, working life ≥50000 hours.



Front Cable Entry



Closed End cap

SPECIFICATION

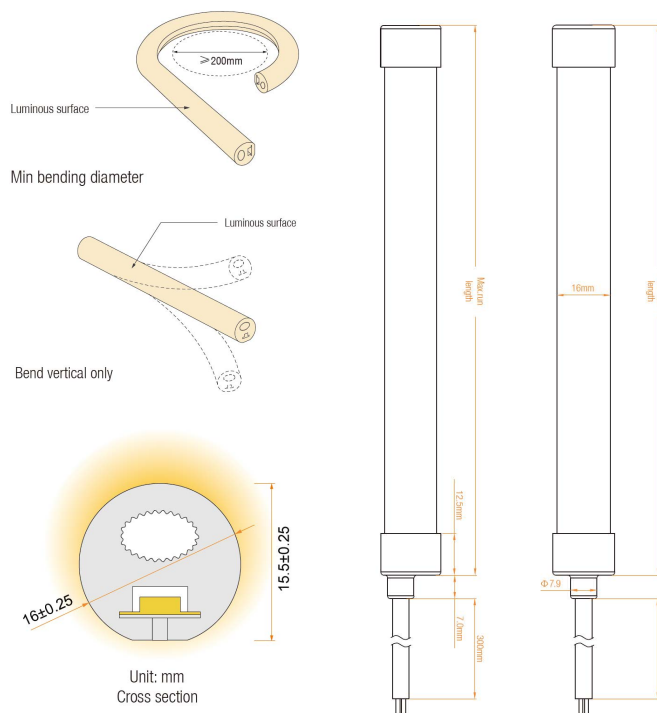
Basic Parameters

Specification	
Size	16mm (W) x 15.5mm (H)
Input Voltage	DC24V
Max Power	10W/1m
Lumen (per/m)	660 / 650 / 700 730 / 730 / 350
Efficiency (lumen per/w)	66.0 / 65.0 / 70.0 73.0 / 73.0 / 35.0
Colour / CCT	2700K / 3000K / 4000K / 6500K / CCT / RGB
Cutting Increment	50mm
IP Rating	IP67
CRI	≥90
Finish	White
LED Pin Temperature	Max 65°C
Storage Temperature	-25°C~ 60°C
Ambient Temperature	-25°C~ 45°C

Product Ordering

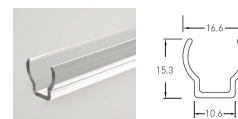
CODE	COLOUR	LM/M	STOCKED
GLOPRO-24-DOME-16-2700-67	2700K	660	S/O
GLOPRO-24-DOME-16-3000-67	3000K	650	S/O
GLOPRO-24-DOME-16-4000-67	4000K	700	S/O
GLOPRO-24-DOME-16-6500-67	6500K	730	S/O
GLOPRO-24-DOME-16-CCT-67	CCT	730	S/O
GLOPRO-24-DOME-16-RGB-67	RGB	350	S/O

Technical Diagram



Recommended Accessories

GLOPRO-24-DOME-16P-1000
PC Transparent profile
1000(±5) x 16.6 x 15.3mm
(L x W x H)



GLOPRO-24-DOME-16P-20
PC Transparent clip
20 x 16.6 x 15.3mm
(L x W x H)

