



# CORNER RGB CONNECTOR

## 4-CORE 10MM

### FEATURES

- Click'n'Play LED strip corner connector.
- Consistent solder-grade connection.
- Very fast, easy and reliable.
- Break-free lighting around corners
- Single feed compatible
- Fits any profile that fits the compatible strip.
- Works with any 10mm 4-core (RGB colour) strip light.

Scan QR code to watch video instruction.

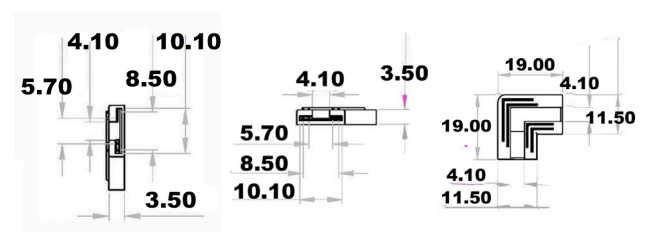


### SPECIFICATION

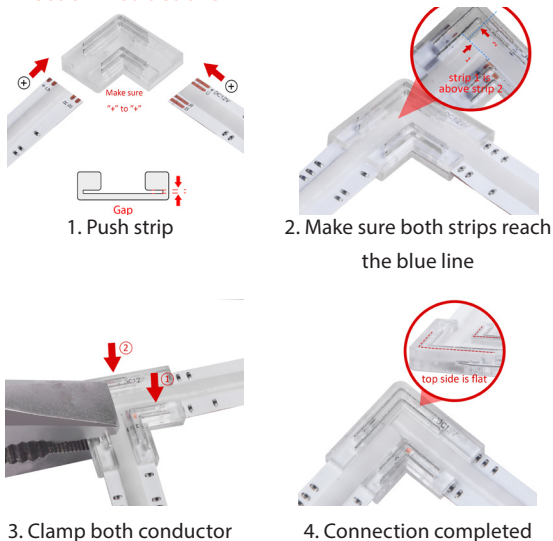
#### Basic Parameters

Size	19mm x 19mm x 3.5mm
Pin Quantity	4 Pin (RGB Colour)
Connection Type	Board to Board
Colour	Transparent
Temperature Resistance	105°
Voltage	DC 3-24 V
Current	4A
IP Rating	IP20
PCB Width	10mm

#### Technical Diagram



#### Connection Instructions



#### Recommended Solution/Accessories

##### LED STRIPS

DFR-24-10-RGB-20



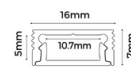
##### CONNECTORS

SC-FEED-4C



##### PROFILE

1607 / 2507 / 1616



SC-STR-RGB-4C



##### TRANSFORMER

GSTRAN-90-24-C (5m)  
HLG-150-24 (10m)



##### CONTROLLER

RF-RGB-2Z  
RGB RECEIVER  
RF-RGB-038

#### Product Ordering

CODE	SHAPE	TYPE	STOCKED
SC-CNR-RGB-4C	Corner (L)	Strip to Strip	YES