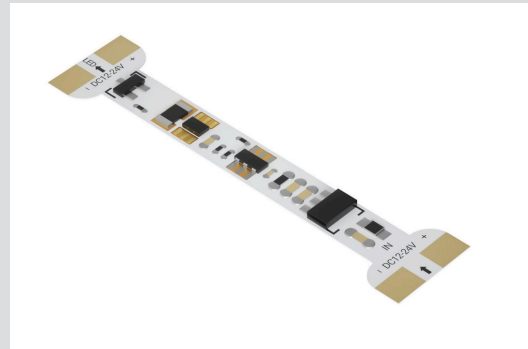




# SWEEP SENSOR

## FEATURES

- Touch-free hand sweep sensor.
- No soldering needed!
- Flexible & cuttable.
- Very fast, easy and reliable.
- Fits any profile that fits 8mm strip.
- Can run up to 8m of dotfree (DFR) strips.
- On/Off Switch: Hand Sweep
- Dimming: Hand Holding for 1 Second

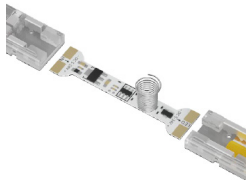


## SPECIFICATION

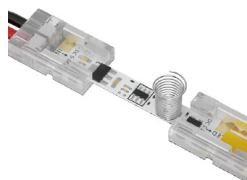
### Basic Parameters

Size	40mm x 10mm
Trimmed Width	5-10mm
Sensitive Distance	80mm
Dimming Type	Cycle Dimming
Dimming Trigger	Hold for 1 sec
Voltage	DC 5-24 V
Current	3.5A
Max Load	80W
LED Color	Mono
Strip Width	5-10mm

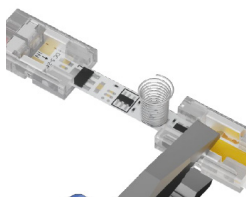
### Connection Instructions



1. Prepare sensor & stripclipz



2. Insert sensor in stripclipz

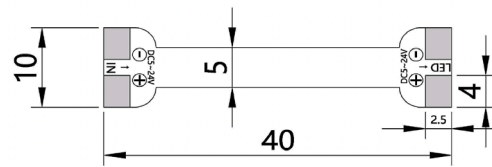


3. Clamp stripclipz



4. Install sensor & stripclipz in the profile.

### Technical Diagram



### Recommended Solution/Accessories

**LED STRIP**  
DFR IP20

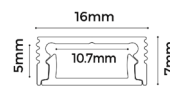


#### CONNECTORS

SC-FEED-2C



**PROFILE**  
1607



SC-CNR-2C



**TRANSFORMER**  
PDV-75-24 (DIM)



SC-WIRE-STR-2C



### Product Ordering

CODE	SHAPE	TYPE	STOCKED
SC-SWEEP-2C	N/A	Strip to Strip	YES