

CORNER CONNECTOR

2-CORE 8MM

FEATURES

- Click'n'Play LED strip corner connector.
- Consistent solder-grade connection.
- Very fast, easy and reliable.
- Break-free lighting around corners
- Single feed compatible
- Fits any profile suited for 8mm strip.
- Works with any 8mm 2-core (single colour) strip light.

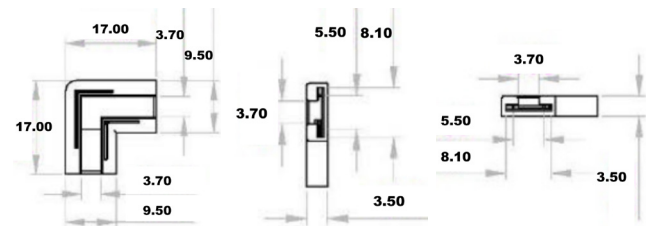


SPECIFICATION

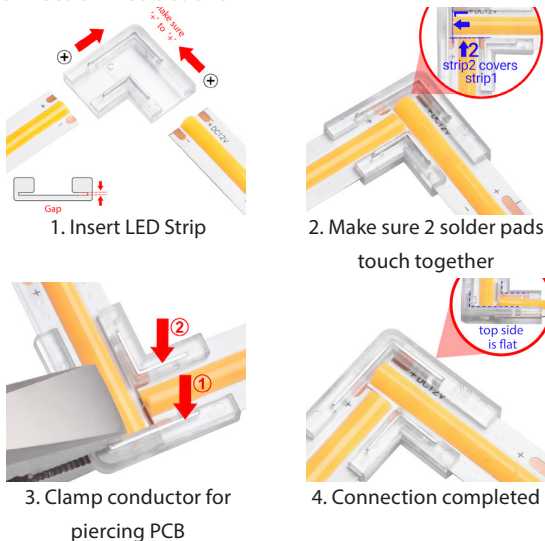
Basic Parameters

Size	17mm x 17mm x 3.5mm
Pin Quantity	2 Pin (single colour)
Connection Type	Strip to Strip
Colour	Transparent
Temperature Resistance	105° C
Voltage	DC 3-24 V
Current	4A
IP Rating	IP20
Strip Width	8mm

Technical Diagram



Connection Instructions



Recommended Solution/Accessories

LED STRIPS
DFR IP20

PROFILE
1607

TRANSFORMER
PDV-75-24 (DIM)

CONNECTORS

SC-STR-2C

SC-FEED-2C

SC-WIRE-STR-2C



Product Ordering

CODE	SHAPE	TYPE	STOCKED
SC-CNR-2C	Corner (L)	Strip to Strip	YES